

## Replacement Dive Planes For CSL E46 M3 Bumper TBO-46-F1-001

The TMS CSL replacement dive-planes are the nicest dive planes on the market. If you have a factory CSL front bumper cover or TMS CSL style front bumper cover these are the pieces you want to replace worn or chipped original parts. We have been working hard to bring you the best looking carbon dive-planes with a deep clear coat look and a clean carbon weave. Note: We only sell the dive-planes as a pair (one left and one right) to keep the dive-planes as a matched set.

### Parts list for kit:

- Left dive-plane
- Right dive-plane
- 6 push pins

### When would it be a good time to perform this work on my car?

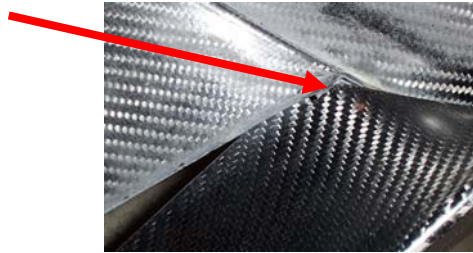
- Any time you have the front end of the car up in the air for maintenance or upgrades.

### Notes:

- On aftermarket style bumpers you may need to drill new holes in the dive-planes or bumper for push pins.

### Install front dive planes

1. Insert inner top edge of dive plane under bumper cover, and slip inner curved part of dive plane over bumper lip



2. Continue to insert top edge of dive plane under the bumper cover. -when fit is satisfactory, install push pins.

