

Affected Vehicles: 2006-2011 E90/E91/E92/E93 3-series models, incl M models
Product(s): Engine Computer Upgrades (DME, ECU)
Subject: Removing the DME/ECU to send to Turner Motorsport

Tools Required:

8mm socket, ratchet

Pick or small flathead screwdriver (preferably with a 90° bend)

Removal Instructions

The engine computer (DME, ECU) is located under the black plastic covers, against the firewall, on the passenger side of the engine bay. You will need to remove these covers to gain access to the DME compartment. Most of these covers either snap together or are held together with 8mm screws.

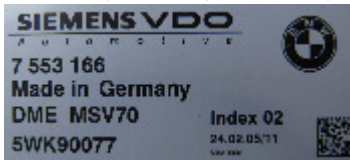
1. Power everything down inside the car – radio, navigation, A/C, even lights. Unplug anything that is plugged into the aux port or cigarette lighter. Plan on not accessing the car at all while the DME is out of the car.
2. Disconnect the air temperature sensor just behind the passenger strut tower (un-snaps).
3. Remove the large black plastic cover on top and in the middle of the firewall. Also remove the A/C microfilter inside.
4. Remove the black plastic cover behind the passenger strut tower. This held in place with tabs. Repeat this for the cover on the driver's side. On reinstallation, ensure that this cover is on securely – it is part of the drainage system to keep water out of the computer area!
5. On the front of the firewall is another tray that runs the wiring harness over the top of the engine. Unsnap the top of this and use the 90° pick to separate the wiring tray from the bulkhead tray.

By now you should have the white compartment behind the passenger strut tower completely exposed. This is where the engine computer is housed.



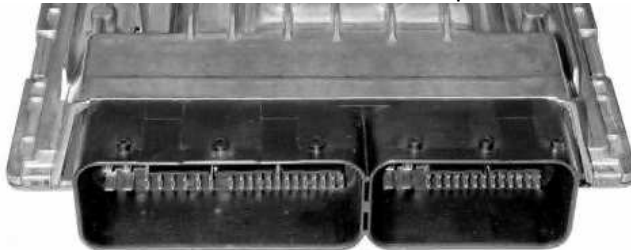
White DME cover on far left. All other covers removed.

- Unsnap the 4 locks on the sides of the cover and remove it. There may be more than one computer in this compartment. Start with the computer closest to the firewall. The engine computer will have a label with “Siemens VDO” and “DME” followed by an alpha-numeric code – MSV70, MSV80, MSV80.1, MSD80, MSS60, etc.



DME label

- Unclip the connectors running over the computer for clear access.
- Unlock the two connectors on the computer itself.



DME connectors

- The computer is held in its housing with tabs. Pry the tabs away from the computer and slide it straight out. Be careful not to tug or catch any other wires while doing so.
- Place the computer on a dry, clean, static-free spot. It would be ideal if you immediately placed the computer into an anti-static bag for shipping. Be very cautious when handling it – it is very sensitive to static electricity!
- Re-installation is the reverse of the above. Make sure that all electrical connectors are seated completely and that all of the plastic covers are secure.
- While the DME is disconnected or removed from the car... **DO NOT INSERT THE KEY FOB OR LOCK/UNLOCK THE DOORS. DO NOT TRY TO START THE CAR. DO NOT TURN ANYTHING ON OR USE ANY FEATURES IN THE CAR.**